

Diesel Truck Driver Training School Inc.



Commercial Driver License

Practice Exams

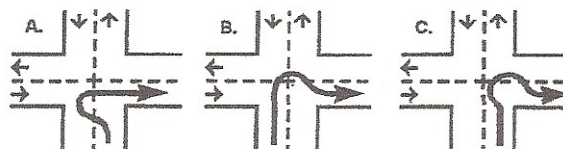
C-1:
GENERAL KNOWLEDGE TEST

HOME OFFICE
7190 Elder Lane
Sun Prairie, WI 53590
608-837-7800

GENERAL KNOWLEDGE TEST

1. If you must cross into the oncoming lane as you make a turn, you should:
 - A. Back up to allow oncoming traffic to pass
 - B. Complete your turn without stopping
 - C. Watch for oncoming traffic
2. Which of these statements about double-clutching and shifting is true?
 - A. You can use the tachometer to tell you when to shift
 - B. Double-clutching should only be used with a heavy load
 - C. Double-clutching should not be used when the road is slippery
3. The best drivers are those who watch and prepare for hazards. This is called being:
 - A. Offensive
 - B. Objective
 - C. Defensive
4. If you do not have a CB radio, what is the first thing you should do at an accident scene?
 - A. Care for the injured
 - B. Protect the area
 - C. Notify authorities
5. The *Driver's Manual* suggests several things to do when you pass a vehicle. Which of these is NOT one of them?
 - A. Assume the other driver does not see you
 - B. Lightly tap your horn
 - C. At night, turn on your high beams before you start to pass and leave them on until you have completely passed the vehicle.
6. Controlled braking:
 - A. Involves locking the wheels for short periods of time
 - B. Is used to keep a vehicle in a straight line when braking
 - C. Should only be used with hydraulic brakes
7. One reason that dry bulk tanks require special care is:
 - A. They can only be filled halfway
 - B. They can easily catch fire
 - C. The load can shift

8. You are driving a 40-foot vehicle at 35 mph. The road is dry and visibility is good. What is the least amount of space that you should keep in front of your vehicle to be safe?
- A. 3 seconds
 - B. 4 seconds
 - C. 2 seconds
9. Whenever you double your speed, it takes about _____ times as much distance to stop.
- A. 4
 - B. 3
 - C. 2
10. *Optional* safety equipment may include emergency phone numbers, tire chains, and:
- A. Charged fire extinguisher
 - B. Tire changing equipment
 - C. Red reflective triangles
11. "Perception distance" is the distance your vehicle travels from the time:
- A. The eyes see a hazard to the time the foot pushes the brake pedal
 - B. The brain tells the foot to push the brake pedal to the time the foot responds
 - C. The eyes see a hazard to the time the brain knows it is a hazard
12. If you have a heavy load that is slowing you down on an upgrade, you should:
- A. Shift into a lower gear
 - B. Exit the road until traffic is lighter
 - C. Drive on the shoulder so others can pass easily
13. You wish to turn right from one 2-lane, 2-way street to another. Your vehicle is so long that you must swing wide to make the turn. Which of these figures shows how the turn should be made?
- A. Figure A
 - B. Figure B
 - C. Figure C



14. Which of these may be a sign of tire failure?
- A. A loud hissing noise
 - B. Vibration
 - C. Wheels skidding
15. Strong winds most affect driving:
- A. On open highways
 - B. Upon exiting tunnels
 - C. Around sharp curves
16. You are checking your tires for a pre-trip inspection. Which of these statements is true?
- A. 2/32-inch tread depth is safe for the front tires
 - B. Radial and bias-ply tires can be used together on the same vehicle
 - C. Tires of mismatched sizes should not be used on the same vehicle
17. What should you do if a car coming toward you at night keeps its high beams on?
- A. Flash your high beams quickly at the other driver
 - B. Look to the right lane or edge markings of the road
 - C. Slow down and look straight ahead in your lane
18. To avoid a crash, you had to drive onto the right shoulder. You are now driving at 40 mph on the shoulder. How should you move back onto the pavement?
- A. If the shoulder is clear, stay on it until your vehicle has come to a stop. Then move back onto the pavement when it is safe
 - B. Brake hard to slow the vehicle, then steer sharply onto the pavement
 - C. Keep moving at the present speed and steer very gently back onto the pavement
19. How many missing or broken leaves in any leaf spring will cause a commercial vehicle to be placed out of service?
- A. 1/4 of the total number
 - B. 1/3 of the total number
 - C. 1/2 of the total number
20. What will help keep an engine cool in hot weather?
- A. Making sure the engine has the right amount of oil
 - B. Driving faster to force more air into the radiator
 - C. Running the air conditioner

21. You can see a marking on a vehicle ahead of you. The marking is a red triangle with an orange center. What does the marking mean?
- A. The vehicle may be a slow-moving vehicle
 - B. The vehicle is hauling hazardous materials
 - C. The vehicle is being driven by a student driver
22. Which of these is NOT a danger of rough acceleration?
- A. Damage to coupling
 - B. Mechanical damage
 - C. Tire damage
23. Which of these is a good thing to do when steering to avoid a crash?
- A. Apply the brakes while turning
 - B. Do not turn any more than needed to clear what is in your way
 - C. Avoid counter-steering
24. In mountain driving, you will have to use lower gears to drive safely on the grades. Which of these does NOT affect your choice of gears?
- A. Weight of the load
 - B. Length of the grade
 - C. Tire tread type
25. Which of these statements about backing a heavy vehicle is NOT true?
- A. You should use a helper and communicate with hand signals
 - B. Because you cannot see, you should back slowly until you slightly bump into the dock
 - C. You should back and turn toward the driver's side whenever possible
26. How far should a driver look ahead of the vehicle while driving?
- A. 12-15 seconds
 - B. 5-8 seconds
 - C. 1-2 seconds
27. Which of these is NOT a type of retarder?
- A. Hydraulic
 - B. Robotic
 - C. Electric

28. Which of these is NOT true about engine belts in hot weather?
- A. Cracking is likely to occur but is not a safety threat
 - B. You can check the tightness of the belts by pressing on them
 - C. Loose belts will not turn the water pump and/or fan on properly
29. Which of these is NOT true?
- A. Alcohol goes directly from the stomach to the blood stream
 - B. BAC is determined by how fast you drink, how much you drink, and your weight
 - C. A drinker can control how fast his or her body absorbs and gets rid of alcohol
30. You should try to park so that:
- A. You can pull forward when you leave
 - B. At least one curb is next to your vehicle
 - C. Your vehicle is protected by trees or some other overhang
31. The engine braking effect is greatest when the engine is _____ the governed RPMs and the transmission is in the _____ gears.
- A. Above, lower
 - B. Near, lower
 - C. Below, higher
32. Which of these is NOT a proper use of vehicle lights?
- A. Turning on your headlights during the day when visibility is reduced due to rain or snow
 - B. Flashing your brake lights to warn someone behind you that you are slowing down
 - C. Flashing your brake lights to get someone off your tail
33. What should you do before driving in mountains?
- A. Carry tire chains in your vehicle
 - B. Know the escape ramp locations on your route
 - C. Unhook your steering axle brakes
34. Which of these statements about shipping hazardous materials is true?
- A. A 4-inch, diamond-shaped hazardous materials label must be on the container
 - B. A 4-inch, circular, red hazardous material label must be on the container
 - C. Gas cylinders that will not hold a label must be shipped under cover

35. If a straight vehicle (no trailer or articulation) goes into a front-wheel skid, it will:
- A. Slide sideways and spin out
 - B. Go straight ahead even if the steering wheel is turned
 - C. Go straight ahead but will turn if you turn the steering wheel
36. Retarders:
- A. Can cause the drive wheels to skid when they have poor traction
 - B. Allow you to disconnect the steering axle brakes
 - C. Cannot be used on interstate highways
37. Which of these is the proper way to signal to change lanes?
- A. Signal just as you begin to change lanes, and drift over slowly
 - B. Signal before you change lanes, and then move over quickly
 - C. Signal early, and change lanes slowly and smoothly
38. When stopping on a one-way or divided highway, you should place reflective triangles at:
- A. 10 feet, 100 feet, and 500 feet toward approaching traffic
 - B. 10 feet, 100 feet, and 200 feet toward approaching traffic
 - C. 10 feet, 50 feet, and 100 feet toward approaching traffic
39. For your safety, when setting out reflective triangles you should:
- A. Hold the triangles between yourself and oncoming traffic
 - B. Carry the triangles at your side
 - C. Keep them out of sight while you walk to the spots where you set them out
40. What is the first thing you should do if your brakes fail while going down a hill?
- A. Call or radio for help
 - B. Try to use your parking brake to stop
 - C. Get off the road as soon as possible
41. The distance that you should look ahead of your vehicle while driving amounts to about _____ mile at highway speed.
- A. 1/4
 - B. 1/2
 - C. 3/4

42. Which of these statements about a pre-trip inspection is true?
- A. If you need to tilt the cab, secure loose things so they do not fall and break something
 - B. Leave the key in the ignition so you do not lose it while you are under the truck
 - C. If parked on a street, you should walk so that you face away from oncoming traffic
43. Which statement is true?
- A. Most people are more alert at night than during the day
 - B. Most hazards are easier to see at night than during the day
 - C. Many heavy vehicle accidents occur between midnight and 6:00 a.m.
44. What is the best advice for drivers when a heavy fog occurs?
- A. Alternate your low and high beams to improve your vision
 - B. Do not drive too slowly, or other drivers may hit you
 - C. Park at a rest area or truck stop until the fog has lifted
45. Which of these is true about hazardous materials?
- A. Every truck carrying any amount of hazardous materials must have placards
 - B. All hazardous materials present a health and safety threat
 - C. All public roads allow trucks carrying hazardous materials if they are loaded correctly
46. How do you correct a rear-wheel acceleration skid?
- A. Apply more power to the wheels
 - B. Downshift
 - C. Stop accelerating
47. You are checking your brakes and suspension system for a pre-trip inspection. Which of these statements is true?
- A. Just one missing leaf spring is not dangerous
 - B. Spring hangers that are cracked but still tight are not dangerous
 - C. Brake shoes should not have oil, grease, or brake fluid on them
48. Which of these systems should receive extra attention during a winter weather inspection?
- A. Steering
 - B. Suspension
 - C. Exhaust

49. Which of these is a good thing to remember about drinking alcohol?
- A. Small quantities of alcohol improve reaction time
 - B. Alcohol first affects judgment and self-control, which are necessary for safe driving
 - C. The driver can control how fast the body gets rid of alcohol
50. When starting to move up a hill from a stop:
- A. Release the parking brake as you apply engine power
 - B. Engage the clutch and accelerate quickly
 - C. Keep the trailer brake hand valve applied until you reach 20 mph

C - 1

ANSWER KEY FOR GENERAL KNOWLEDGE TEST

1. C	26. A
2. A	27. B
3. C	28. A
4. B	29. C
5. C	30. A
6. B	31. B
7. C	32. C
8. B	33. B
9. A	34. A
10. B	35. B
11. C	36. A
12. A	37. C
13. C	38. B
14. B	39. A
15. B	40. B
16. C	41. A
17. B	42. A
18. A	43. C
19. A	44. C
20. A	45. B
21. A	46. C
22. C	47. C
23. B	48. C
24. C	49. B
25. B	50. A